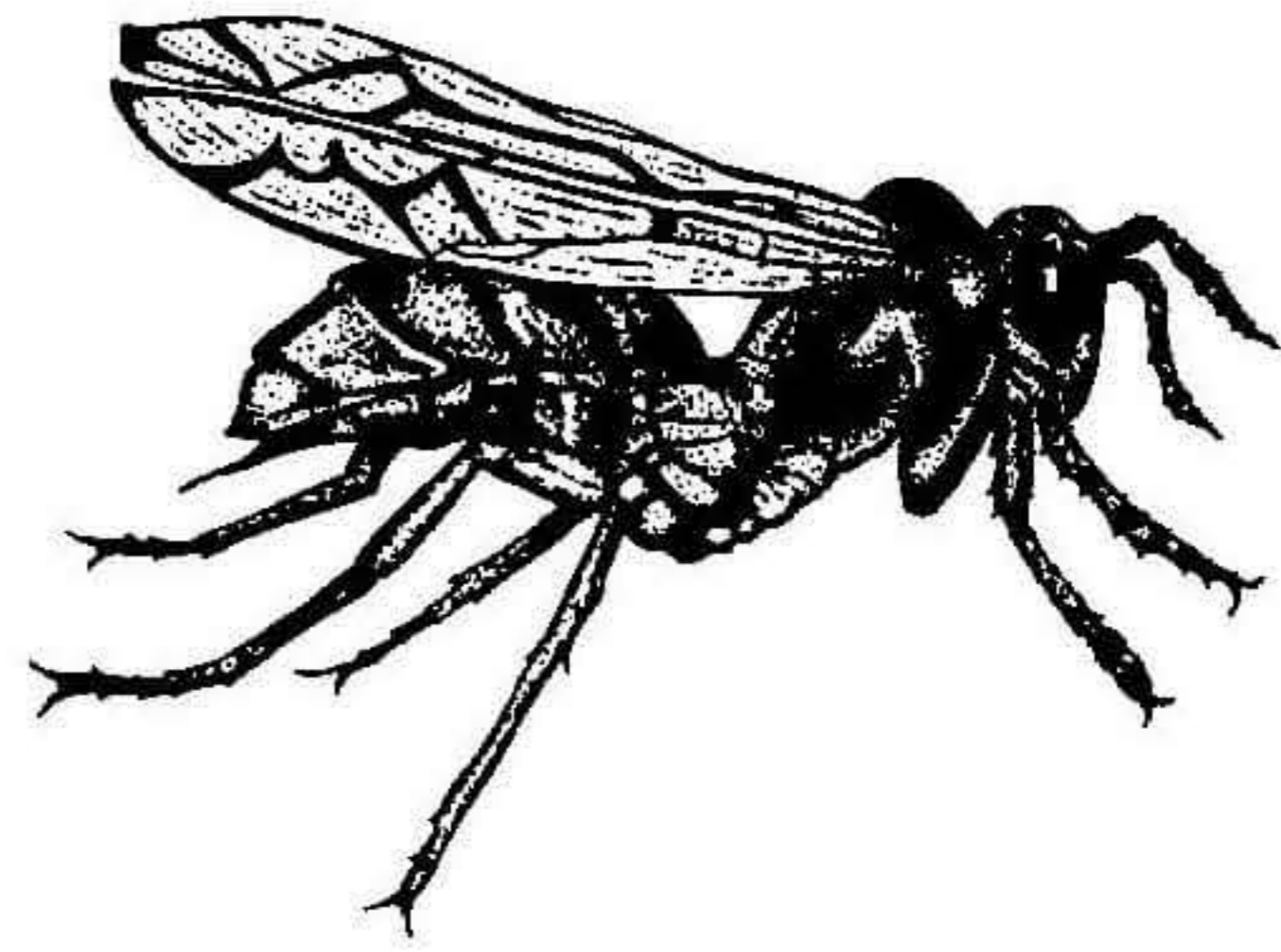
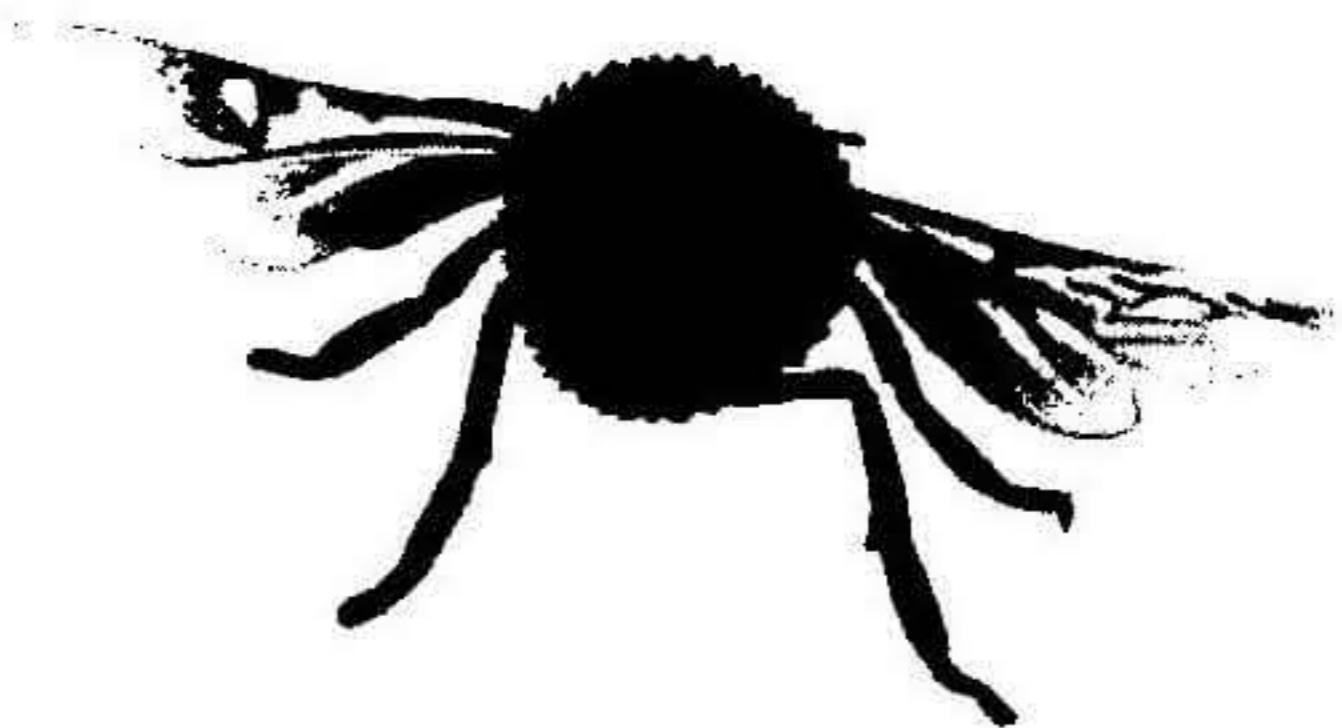


BUZZING AROUND

The **bee** is an insect that lives in almost every part of the world. There are 10,000 different kinds of bees. But only the honeybee makes honey and wax. Honeybees are social insects. That means they live and work together in large groups. Thousands of them live together in a group called a colony. On its own, the honeybee does not live long. The colony can go on for years. Each colony has a queen bee. She lays eggs. The other bees in the colony are the workers and the drones. The worker bees provide food and shelter. They protect the nest, or hive. The drones mate with the queen. Then she can lay eggs and make more bees. The hive is built from beeswax. It is shaped into a waterproof honeycomb. The honeycomb is a group of six-sided cells. Pollen and nectar from flowers are stored in the cells. The nectar will turn into honey.

The honeybee has five eyes. It has antennae that it uses for smelling. It has four wings, and on each side of its body it has three legs. Bees can tell if a taste is sweet, sour, salty, or bitter, just like humans can. The worker bees are the ones that will sting you. The good news is the worker bee dies a few hours after losing its stinger. Drones do not



have stingers. The queen bee stings only other queen bees.

The **wasp** is one of the smartest insects. It is related to bees and ants. Wasps are social insects and live in colonies. There are queen, worker, and male wasps. Each has a different job to do. Hornets and yellow jackets are members of this wasp family. Most wasps have thin bodies with four wings. They can give painful stings. But they are not mean. They sting only when they are afraid or disturbed.

Wasps can make paper. They chew on old wood and plants until it is just like the paper on which this story is printed. It is said the Chinese invented paper after watching wasps. The wasps make their nest from this paper. The nest is made of rows of cells, like a honeycomb. Many layers of paper on the outside make it waterproof. A wasp colony lasts only through the summer. Most wasps do not store food. In the fall, they all die except the young queens. In the spring, she lays her eggs, and more wasps are hatched. Wasps are useful insects. They kill caterpillars and other insects that harm crops and plants.

Use the **COMPARISON SHEET** to show the similarities and differences between bees and wasps. Compare their nests, the way they live, how they help man, and any other facts you have found.